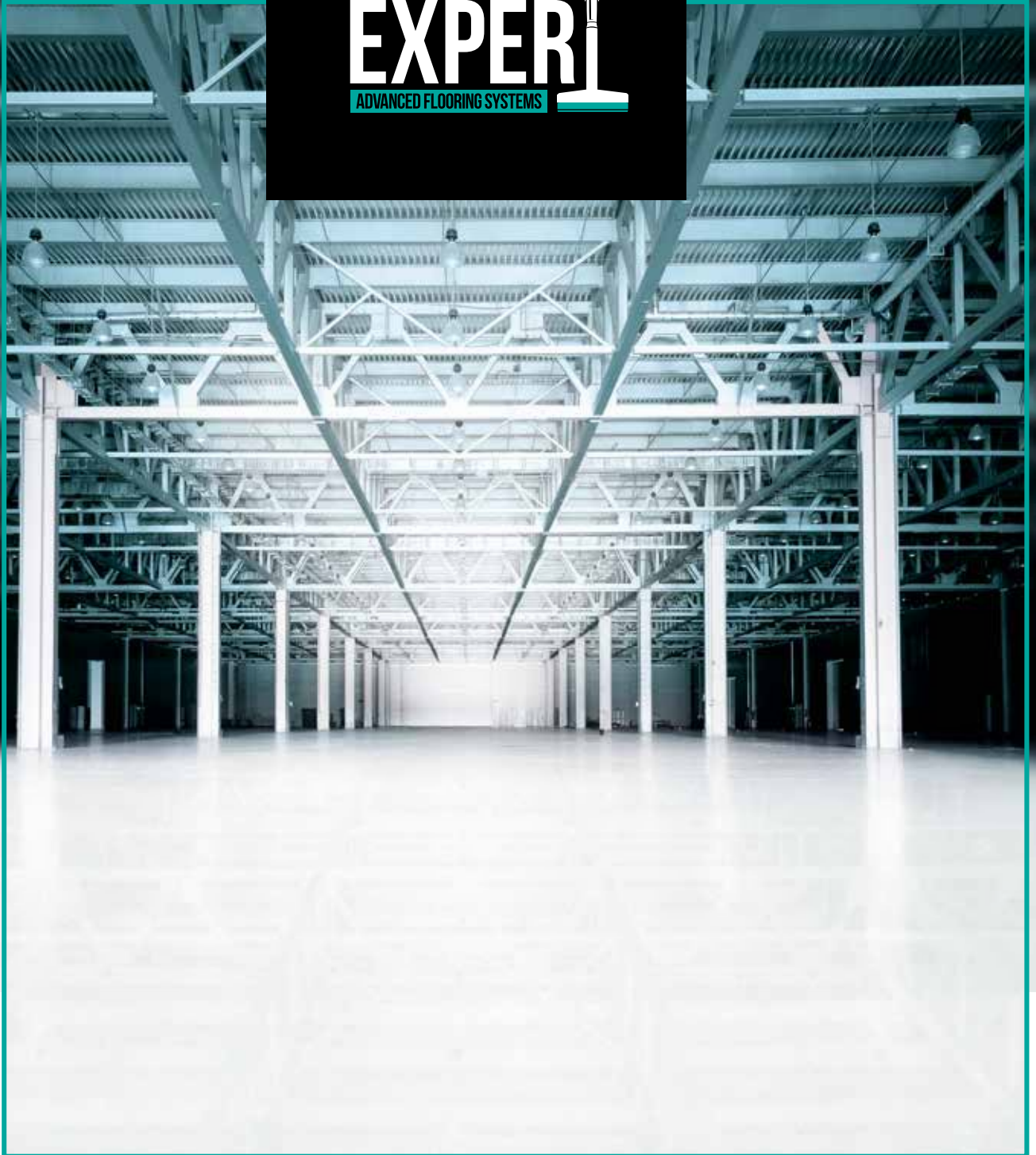


# FLOOR EXPER

ADVANCED FLOORING SYSTEMS



## PRODUCT CATALOGUE

## FLOORING SYSTEMS THAT MEET HIGH CRITERIA OF FUNCTIONALITY AND AESTHETICS

FLOOR EXPERT flooring systems meet high criteria of functionality, be it mechanical and chemical resistance, durability, ease of cleaning and maintenance, and installation. The result is a uniform surface, without joints and pores, which provides hygienic safety, but at the same time meets high aesthetic requirements, especially when it comes to floor surfaces in private, public, commercial and administrative spaces. Namely, the choice of shades and different decorative techniques provides countless possibilities of individual design that gives the space a unique and inspiring look.

By applying FLOOR EXPERT flooring systems, different layer thicknesses can be achieved, as well as a smooth or rough (anti-slip) surface, high hardness and wear resistance, which is able to withstand high mechanical and chemical loads. This is why FLOOR EXPERT systems are the ideal solution for floor protection in industrial plants, warehouses, workshops and garages.

[Discover the variety of FLOOR EXPERT systems!](#)

## PREPARATION OF THE CONCRETE SUBSTRATE

The first condition for the quality and durability of Floor Expert Systems is proper preparation of the concrete substrate. Bumps and weakly bound surface layer must be removed from concrete surfaces. The surface must be clean and free of grease, rubber marks and other stains. Our experts recommend using mechanical processing shot

blasting or grinding with diamond grinder. Dust and loose particles must be removed by using a vacuum cleaner or brush. After such treatment, pores and capillaries in the substrate must be clearly visible. Then the cracks, pores and uneven sections have to be filled with epoxy mortar.



### REQUIREMENTS FOR CONCRETE SUBSTRATE

**Cohesive strength:**  
> 1.5 N/mm<sup>2</sup>

**Compressive strength:**  
min. 25 N/mm<sup>2</sup>

**Humidity in concrete:**  
< 4% in the upper 4 cm

**Temperature of the concrete:**  
> 3 °C above dew point

### APPLICATION CONDITIONS

**Air temperature, and substrate temperature:**  
min. + 10 °C; max. +30 °C

**Relative humidity:**  
max. 75%, with adequate ventilation.

**There must be no condensation  
(pay attention to the dew point!)**

## FLOOR EXPERT EP PROTECTION SYSTEMS



## SMART SOLUTION FOR PROTECTION AND DECORATION OF INTERIOR CONCRETE FLOORS

### WHY EPOXY FLOOR COATING?

- Fills pores and capillaries in concrete
- Withstands strong mechanical stress
- Easy to clean and repair
- High hygiene protection: coated surfaces are compact, without joints and gaps
- Excellent mechanical and chemical resistance
- Water and moisture proof
- A wealth of design possibilities

### FIELDS OF APPLICATION:

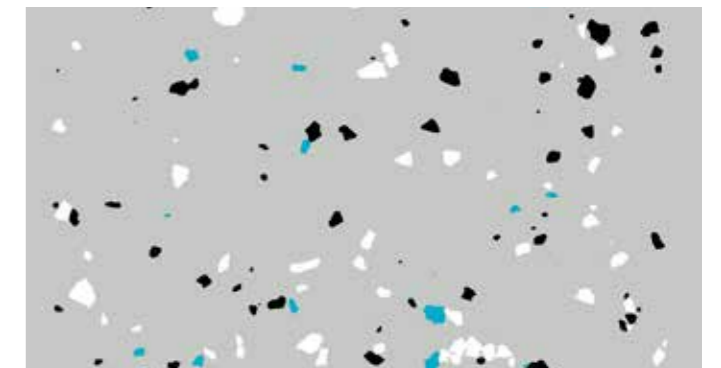
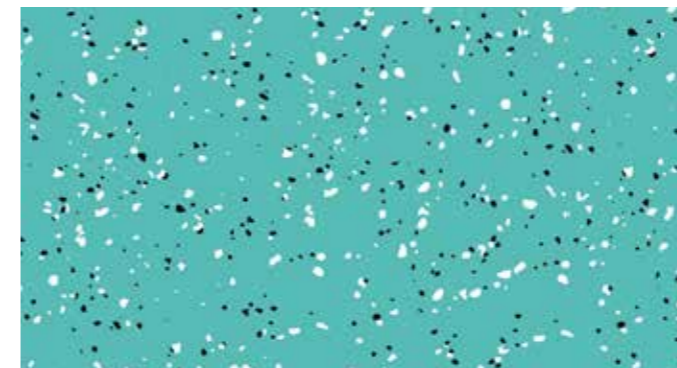
- Industrial plants
- Warehouses
- Workshops
- Garages
- Showrooms
- Shops
- Hospitals
- Laboratories...

### COLOURS AND DECORATIVE TECHNIQUES

FLOOR EXPERT EP coatings are produced in all RAL shades, as well as in other stable shades at individual wishes. Coloured chips – the popular so called “terrazzo”

look, or coloured quartz allows an individual architecture and modern design appearance.

**Make your floor a unique artwork!**



## FLOOR EXPERT EP PRODUCTS



## FLOOR EXPERT EP 101

### 2K primer based on epoxy resin, solvent-free

#### PURPOSE:

- Priming of concrete floors and cement glaze of moderate to strong absorbency
- Binder for levelling mortars and mortar screeds

#### PROPERTIES:

- Penetrates deeply into the surface
- Blocks the moisture in the substrate up to 4 %
- High bond strength to the substrate

#### MIXING RATIO (BY WEIGHT):

- Component A : Component B – 66.9 : 33.1

#### CONSUMPTION:

- Primer: 0.30-0.50 kg/m<sup>2</sup>
- Mortar screed thickness up to 1 mm  
(FLOOR EXPERT EP 1013: Quartz sand - 1:0.5): 1.2-1.4 kg/m<sup>2</sup>/ 1 mm layer
- Mortar screed thickness of 2 mm  
(FLOOR EXPERT EP 101: Quartz sand - 1:1): 1.6 kg/m<sup>2</sup>/ 1 mm layer
- Mortar screed/ Repair mortar, 15-20 mm layer thickness  
(FLOOR EXPERT EP101: Quartz sand - 1:10) :2.4 kg/m<sup>2</sup>/ 1 mm layer



#### PACKAGING 25 KG:

- Component A 16.7 kg
- Component B 8.3 kg

#### COVERAGE:

- 62.5 m<sup>2</sup> per coat

#### PACKAGING 10 KG:

- Component A 6.7 kg
- Component B 3.3 kg

#### COVERAGE:

- 25 m<sup>2</sup> per coat

## FLOOR EXPERT EP 1013

### 2K economical primer based on epoxy resin, solvent-free

#### PURPOSE:

- Priming of concrete floors and cement glaze of moderate to strong absorbency
- Binder for levelling mortars and mortar screeds

#### PROPERTIES:

- Penetrates deeply into the surface
- Blocks the moisture in the substrate up to 4%
- High bond strength to the substrate
- Adheres well to ceramic tiles and other smooth and non-absorbent surfaces

#### MIXING RATIO (BY WEIGHT):

- Component A : Component B – 76.9 : 23.1

#### CONSUMPTION:

- Primer: 0.30-0.50 kg/m<sup>2</sup>
- Mortar screed thickness up to 1 mm (FLOOR EXPERT EP 1013: Quartz sand - 1:0.5):1.59 kg/m<sup>2</sup>/1 mm layer
- Mortar screed thickness of 2 mm (FLOOR EXPERT EP 1013: Quartz sand - 1:1):1.8 kg/m<sup>2</sup>/1 mm layer
- Mortar screed/ Repair mortar, 15-20 mm layer thickness (FLOOR EXPERT) EP 1013: Quartz sand - 1:8):2.4 kg/m<sup>2</sup>/ 1 mm layer



#### PACKAGING 20 KG:

- Component A 15.4 kg
- Component B 4.6 kg

#### COVERAGE:

- 50 m<sup>2</sup> per coat

## FLOOR EXPERT EP 101E

### 2K elastic primer based on flexible epoxy resin, solvent-free

#### PURPOSE:

- Priming of asphalt, tarmac, and other elastic substrates
- Binder for levelling mortars and mortar screeds

#### PROPERTIES:

- Elastic, bridges static cracks in substrate
- Blocks the moisture in the substrate up to 4%
- High bond strength to the substrate
- Resistant to mechanical load

#### MIXING RATIO (BY WEIGHT):

- Component A : Component B – 80 : 20

#### CONSUMPTION:

- Primer: 0.30-0.60 kg/m<sup>2</sup>
- Mortar screed thickness up to 1 mm (FLOOR EXPERT EP 101E: Quartz sand - 1:0.5):1.45 kg/m<sup>2</sup>/1 mm layer
- Mortar screed thickness of 2 mm (FLOOR EXPERT EP 101E: Quartz sand - 1:1):1.63 kg/m<sup>2</sup>/1 mm layer
- Mortar screed/ Repair mortar, 15-20 mm layer thickness (FLOOR EXPERT) EP 101E: Quartz sand - 1:8):2.2 kg/m<sup>2</sup>/ 1 mm layer



#### PACKAGING 20 KG:

- Component A 16.0 kg
- Component B 4.0 kg

#### COVERAGE:

- 50 m<sup>2</sup> per coat



## FLOOR EXPERT EP 211/ 211M

### 2K self-levelling floor – for a uniform, smooth and joint-free floor surface

#### PURPOSE:

- Self-levelling floor for protection and decoration of concrete floor surfaces and cement screeds exposed from medium to heavy mechanical and chemical wear (warehouses, workshops, production facilities, garages, laboratories, loading ramps, etc.).
- Functional layer in the broadcast screed system with slip resistant floor surface in garages and production facilities with the so-called "wet processes".

#### PROPERTIES:

- Exceptional abrasion resistance and resistance to action of water and chemicals (see chemical resistance list).
- Highly fillable with quartz sand (economical protection in thick layers)
- Functional layer in systems with slip resistant surface.
- Possibility of tinting according to RAL color chart (3 tinting bases)

#### MIXING RATIO (BY WEIGHT):

- Component A : Component B – 83.3 : 16.7

#### CONSUMPTION:

- Self-levelling screed for smooth layer of 1 mm thickness: 1.58 kg/m<sup>2</sup>
- Self-levelling screed for smooth layer of 1.5 -2.0 mm thickness: 1.83 kg/m<sup>2</sup> of the mixture per 1 mm of the layer thickness (1.22 kg of the mixture (A+B); 0.61 kg Quartz sand 0.1-0.5)



#### PACKAGING 25 KG:

- Component A 20.8 kg
- Component B 4.2 kg

#### COVERAGE:

- Unfilled, applied in 1 mm layer thickness: 15.8 m<sup>2</sup>
- Mixed with quartz sand (1:0.5 pbw), applied in 2 mm layer thickness: 10 m<sup>2</sup>

#### PACKAGING 6 KG:

- Component A 5.0 kg
- Component B 1.0 kg

#### COVERAGE:

- Without filling, applied in a layer thickness of 1 mm: 3.8 m<sup>2</sup>
- Mixed with quartz sand (1:0.5), applied in a layer thickness of 2 mm: 2.5 m<sup>2</sup>

## FLOOR EXPERT EP 311

### 2K epoxy top-coat - a reliable solution for high mechanical and chemical exposure of the floor surface

#### PURPOSE:

- Roller coat for concrete and cement screeds with normal up to medium heavy wear e.g., storage and assembly halls, maintenance workshops, garages and loading ramps
- Self-leveling floor of lower thickness, around 1 mm (trowel application)
- Seal coat in anti-slip systems for heavy wear floors, such as garages, maintenance hangars and for wet process areas, e.g., beverage and food industry.

#### PROPERTIES:

- Fillable with quartz sand
- Excellent chemical and mechanical resistance
- Excellent levelling
- Liquid proof
- Glossy finish
- Slip resistant surface possible
- Creates a barrier against CO<sub>2</sub>
- Possibility of tinting according to RAL color chart (3 tinting bases)

#### MIXING RATIO (BY WEIGHT):

- Component A : Component B – 80.6 : 19.4

#### CONSUMPTION:

- Seal coat (roller application):
  - on a smooth surface: 0.4-0.6 kg/m<sup>2</sup> (applied in two layers)
  - on quartz sand broadcasting: 0.7-1.0 kg/m<sup>2</sup> (applied in two layers)
- Applied with toothed trowel (self-levelling coating): 1.3 -1.5 kg/m<sup>2</sup>/ 1 mm layer thickness



#### PACKAGING 25 KG:

- Component A 20.2 kg
- Component B 4.8 kg

#### COVERAGE:

- Roller application on the smooth surface (2x): 42 m<sup>2</sup>
- Application by trowel (1 mm): 17- 20 m<sup>2</sup>.

#### PACKAGING 6 KG:

- Component A 4.84 kg
- Component B 1.16 kg

#### COVERAGE:

- Roller coating on a smooth surface (2x): 10 m<sup>2</sup>
- Self-leveling layer with a thickness of 1 mm: 4 - 4.6 m<sup>2</sup>

## FLOOR EXPERT EP 310W

### 2K water- based epoxy coating – easy to apply by roller or spraying

#### PURPOSE:

- Seal coat for protection and decoration of concrete floor surfaces exposed to moderate or medium heavy mechanical and chemical wear (warehouses, production facilities, garages, laboratories etc.).

#### PROPERTIES:

- Water dilutable,
- Dry film is abrasion resistant and resistant to the effects of water and chemicals
- Excellent adhesion to the substrate
- Easy to clean and maintain
- Creates a barrier against CO<sub>2</sub>
- Possibility of tinting according to RAL color chart (2 tinting bases)

#### MIXING RATIO (BY WEIGHT):

- Component A : Component B – 76.9 : 23.1

#### CONSUMPTION:

- 0.4-0.6 kg/m<sup>2</sup> (on a smooth surface, applied in two layers)



#### PACKAGING 18 KG:

- Component A 13.8 kg
- Component B 4.2 kg

#### COVERAGE:

- 36 m<sup>2</sup> (applied in two coats)

#### PACKAGING 6 KG:

- Component A 4.6 kg
- Component B 1.4 kg

#### COVERAGE:

- 12 m<sup>2</sup> (applied in two coats)

## FLOOR EXPERT EP CLEAR TOP

### 2K transparent solvent-free epoxy resin coating

#### PURPOSE:

Transparent topcoat as a thin-layer decorative finish in flooring systems, for obtaining different decorative effects and surface-strengthening of the system.

#### PROPERTIES:

- Transparent high gloss finish
- Hardening without volumetric shrinkage
- High mechanical resistance
- A wide range of decorative techniques (metallic flooring, photo-flooring etc.)
- Excellent substrate wetting and flowing properties

#### MIXING RATIO (BY WEIGHT):

- Component A : Component B – 67.7:32.3

#### CONSUMPTION:

- 1.10 kg /m<sup>2</sup> per 1 mm layer thickness.



#### PACKAGING 10 KG:

- Component A 6.77 kg
- Component B 3.23 kg

#### COVERAGE:

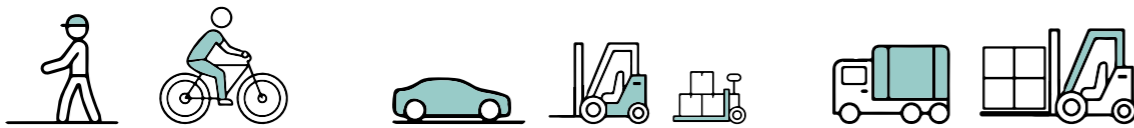
- 9.1 m<sup>2</sup>, for a 1 mm thick layer.





## FLOOR EXPERT EP PROTECTION SYSTEMS

**2K water- based epoxy coating –  
easy to apply by roller or spraying**



Low: LD1, LD2

Medium: MD1, MD2

High: HD1, HD2

Pedestrians, cyclists

Passenger cars, forklifts,  
cranes, trolleys

Trucks, heavy forklifts

### Protection system LD1:

- Primer 1x  
FLOOR EXPERT EP 101 or  
FLOOR EXPERT EP 1013
- Finishing coloured coat 2x:  
2k water-based epoxy coating  
FLOOR EXPERT EP 310W

### Protection system LD2:

- Primer 1x  
FLOOR EXPERT EP 101 or  
FLOOR EXPERT EP 1013
- Finishing coloured coat 2x:  
2k solvent-free epoxy coating  
FLOOR EXPERT EP 311

### Protection system MD1:

- Primer 1x  
FLOOR EXPERT EP 101 or  
FLOOR EXPERT EP 1013
- 2k solvent-free epoxy coating applied  
in thickness up to 1.0-1.5 mm  
FLOOR EXPERT EP 311 or  
FLOOR EXPERT EP 211

### Protection system MD2:

- Primer 1x  
FLOOR EXPERT EP 101 or  
FLOOR EXPERT EP 1013
- Quartz sand broadcasting  
FLOOR EXPERT quartz ...
- Seal coat  
2k solvent-free epoxy coating  
FLOOR EXPERT EP 311

### Protection system HD1:

- Primer 1x  
FLOOR EXPERT EP 101 or  
FLOOR EXPERT EP 1013
- 2k solvent-free epoxy self-levelling  
floor, applied in thickness 1.5 – 2.0 mm  
FLOOR EXPERT EP 211

### Protection system HD2:

- Primer 1x  
FLOOR EXPERT EP 101 or  
FLOOR EXPERT EP 1013
- 2k solvent-free epoxy self-levelling floor  
FLOOR EXPERT EP 211M
- Quartz sand broadcasting until saturation  
FLOOR EXPERT quartz ...
- Seal coat  
2k solvent-free epoxy coating  
FLOOR EXPERT EP 311

Thickness: 0.15-0.80 mm

Thickness: 0.8 -1.5 mm

Thickness: 1.5-3.0 mm or 2.0 -4.0 mm

## FLOOR EXPERT PU AND PAS PROTECTION SYSTEMS



## SMART SOLUTION FOR PROTECTION AND DECORATION OF INTERIOR AND EXTERIOR CONCRETE FLOORS

### FIELDS OF APPLICATION

- Protective systems with crack-bridging properties
- Floors in public objects like kindergartens, sport objects and similar (foot-step noise compensation)
- Industrial and public object floors where there is need for better acid resistance, shock impact resistance and resistance to scratching (compared to standard epoxy flooring systems)

### PROPERTIES

- Good chemical and mechanical resistance
- Waterproof
- Glossy finish
- Slip resistant surface possible.

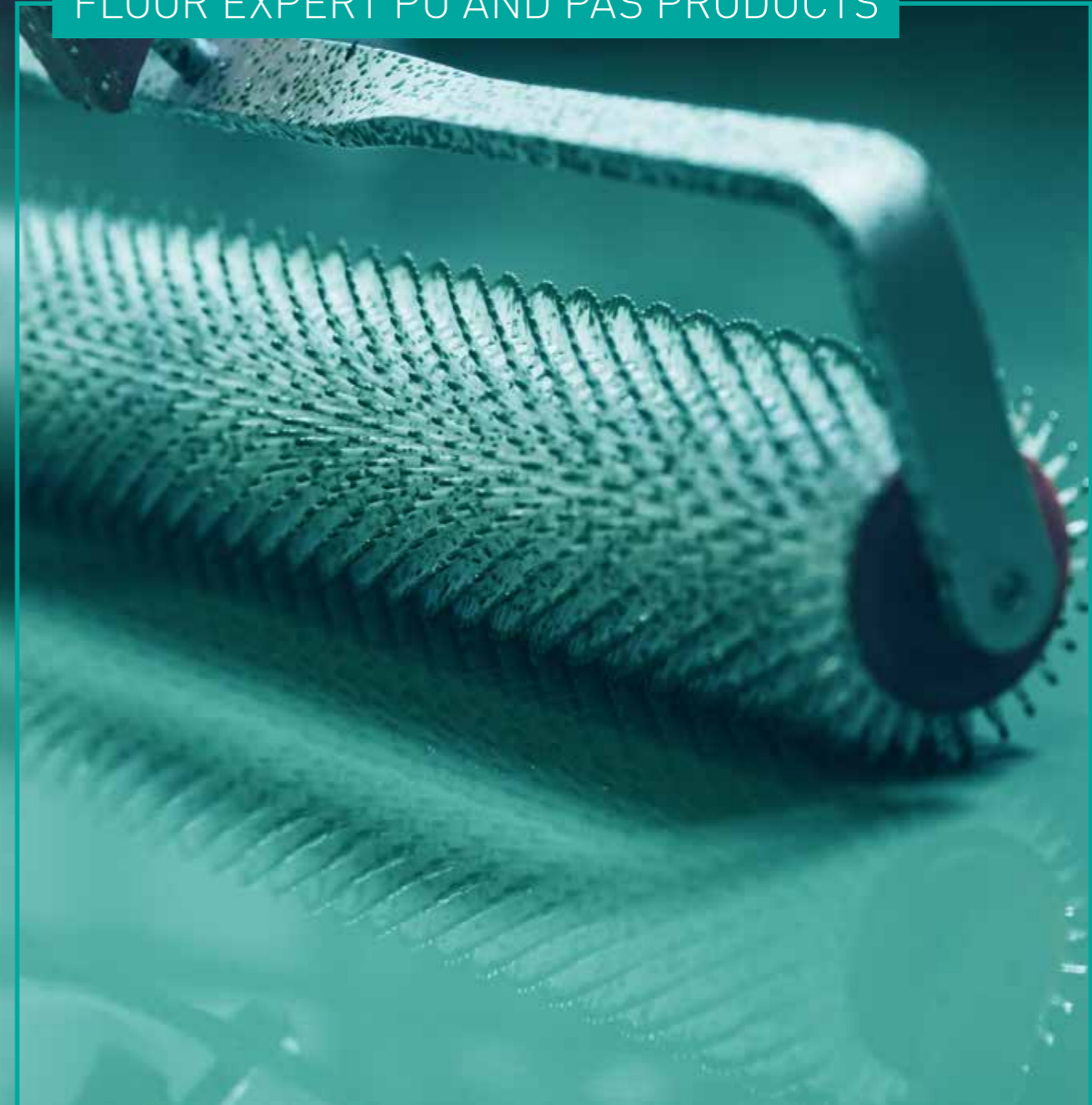
### COLOURS AND DECORATIVE TECHNIQUES

FLOOR EXPERT PU protection systems are produced in all RAL shades, as well as in other stable shades at individual wishes.

Coloured chips – the popular so called “terrazzo” look, or coloured quartz allows an individual architecture and modern design appearance.



## FLOOR EXPERT PU AND PAS PRODUCTS



## FLOOR EXPERT PU 211 HE

### 2K-PU self-leveling system hard elastic – solvent free

#### PURPOSE:

- Self-levelling floor coating for protection and decoration of concrete floor surfaces and cement glaze exposed to medium heavy mechanical and chemical wear (industrial flooring, shops, schools, hospitals, offices, halls and lobbies).
- For interior floor surfaces only.

#### PROPERTIES:

- Hard surface, but flexible film
- Seamless floor surface
- Good impact resistance
- Solvent- free
- Waterproof
- Easy maintenance of the floor surfaces

#### MIXING RATIO (BY WEIGHT):

- Component A : Component B – 81.3 : 18.7

#### CONSUMPTION:

- 1.35 kg/m<sup>2</sup> of the mixture (A+B) per 1 mm of the layer thickness



#### PACKAGING 25 KG:

- Component A 20.33 kg
- Component B 4.67 kg

#### COVERAGE:

- Applied in thickness 1.5 mm: 12.3 m<sup>2</sup>.

## FLOOR EXPERT PU 310

### 2K hard- elastic acrylic-polyurethane solvent-based UV-resistant topcoat

#### PURPOSE:

- Topcoat for protection and decoration of external and internal concrete floor surfaces exposed to moderate to medium mechanical and chemical wear (terraces, warehouses, production facilities, garages, laboratories, etc.).
- It is used as a final seal coat in Floor expert EP and PU flooring systems.

#### PROPERTIES:

- Resistant to wear and to external weather conditions
- Excellent adhesion to the substrate
- Easy to clean and maintain by washing
- Possibility of application on flexible substrates
- Creates a barrier against CO<sub>2</sub>
- Possibility of tinting according to RAL color chart (2 tinting bases)

#### MIXING RATIO (BY WEIGHT):

- Component A : Component B – 84 : 16

#### CONSUMPTION:

- Applied in two layers on a smooth surface: 0.2-0.3 kg/m<sup>2</sup>



#### PACKAGING 18 KG:

- Component A 15.12 kg
- Component B 2.88 kg

#### COVERAGE:

- 72 m<sup>2</sup> (applied in two coats on a smooth surface)

#### PACKAGING 6 KG:

- Component A 5.04 kg
- Component B 0.96 kg

#### COVERAGE:

- 24 m<sup>2</sup> (applied in two coats on a smooth surface)

## FLOOR EXPERT PU 300W (matte / semi-gloss)

### 2K waterborne transparent topcoat based on polyurethane resin

#### PURPOSE:

- Finishing layer in EP and PU systems when a matte or semi-gloss surface appearance is to be achieved and an additional protective layer on the floor surface with decorative chips.

#### PROPERTIES:

- Matte or semi-gloss surface appearance
- Increased resistance to standard chemicals that can affect floor surface
- Increased wear and scratch resistance
- Low odor
- Easy maintenance of the floor.

#### MIXING RATIO:

Matte:

- Component A : Component B – 90.9:9.1 (by weight)

Semi-gloss:

- Component A : Component B – 91.7:8.3 (by weight)

#### CONSUMPTION:

- 0.08 - 0.12 kg/m<sup>2</sup> per layer



#### PACKAGING 15 KG:

- Component A Matte: 13.63 kg/  
Semi-gloss: 13.76 kg
- Component B Matte: 1.37 kg/  
Semi-gloss: 1.24 kg

#### COVERAGE:

- 150 m<sup>2</sup> (applied in one coat on a smooth surface)

#### PACKAGING 5 KG:

- Component A Matte: 4.54 kg/  
Semi-gloss: 4.59 kg
- Component B Matte: 0.46 kg/  
Semi-gloss: 0.41 kg

#### COVERAGE:

- 50 m<sup>2</sup> (applied in two coats on a smooth surface)

## FLOOR EXPERT PAS 311 HE

### 2K hard-elastic fast curing pigmented topcoat based on polyaspartic resin, solvent-free, resistant to outdoor exposure.

#### APPLICATION:

- Finishing layer on Floor expert EP and PU flooring systems exposed to outdoor conditions.
- Pigmented topcoat in industry facilities, laboratories, showrooms, warehouses, garages, etc.

#### PROPERTIES:

- Resistant to wear and resistant to the action of water and chemicals (see the resistance table)
- solvent-free
- short hardening time (the floor is ready for pedestrian traffic after approx. 1 hour)
- UV stable
- can be applied directly to concrete
- compatible with different substrates (PU, EP, ++)
- excellent mechanical resistance
- the possibility of tinting according to the RAL tone card.

#### MIXING RATIO (BY WEIGHT):

Component A : Component B – 74 : 26

#### CONSUMPTION:

Applied by roller in two layers, on a smooth surface: 0.4-0.6 kg/m<sup>2</sup>

#### PACKAGING:

Set of 18 kg

Component A 13.32 kg

Component B 4.68 kg

#### COVERAGE:

30 m<sup>2</sup> (applied in two layers on a smooth surface).

#### PACKAGING:

Set of 6 kg

Component A 4.54 kg

Component B 1.56 kg

#### COVERAGE:

10 m<sup>2</sup> (applied in two layers on a smooth surface).

## FLOOR EXPERT PAS TRANSPARENT

**2K transparent, fast-curing,  
UV-stable, polyaspartic topcoat**

### PURPOSE:

- For use as a topcoat in interior or exterior flooring systems, such as decorative quartz broadcast systems (stone carpets), decorative flake broadcast systems. Suitable also for use as a protective floor coating in industries, warehouses, laboratories, showrooms, garages, etc.
- It can also be used as a binder on decorative quartz broadcast systems (stone carpet floorings) or flake broadcast systems.

### PROPERTIES:

- Superior mechanical resistance
- Excellent UV stability
- Fast curing (the floor is ready for pedestrian traffic after 5 hours).
- High abrasion resistance
- Can be applied directly to concrete substrate.
- Excellent resistance to a wide range of chemicals
- High resistance to pedestrian and vehicle traffic



### MIXING RATIO (BY WEIGHT):

- Component A : Component B – 54 : 46

### CONSUMPTION:

- 300-400 g/m<sup>2</sup> per layer, depending of the substrate

### PACKAGING 18 KG:

- Component A 9.72 kg (metal drums)
- Component B 8.28 kg (metal drums)

### COVERAGE:

- 30 m<sup>2</sup> (applied in two layers on a smooth surface)

## FLOOR EXPERT PU/PAS PROTECTION SYSTEMS



LD1, LD2	Medium: MD1, MD2	High: HD1, HD2
Pedestrians, cyclists	Passenger cars, forklifts, cranes	Trucks, heavy forklifts
<p><b>Protection system LD1:</b></p> <ul style="list-style-type: none"> <li>• Primer 1 x Floor Expert EP 101 or Floor Expert EP 1013</li> <li>• Finishing coloured coat 2 x:               <ul style="list-style-type: none"> <li>• 2k sb PU topcoat Floor Expert PU 310</li> </ul> </li> </ul> <p><b>Protection system LD2:</b></p> <ul style="list-style-type: none"> <li>• Primer 1 x Floor Expert EP 101 or Floor Expert EP 1013</li> <li>• Finishing coloured coat 2 x:               <ul style="list-style-type: none"> <li>• 2k PAS topcoat, solvent-free Floor Expert PAS 311 HE</li> </ul> </li> </ul>	<p><b>Protection system MD1:</b></p> <ul style="list-style-type: none"> <li>• Primer 1 x Floor Expert EP 101 or Floor Expert EP 1013</li> <li>• 2k PU self-leveling floor, solvent-free (thickness: 1.5 mm) Floor Expert PU 211 HE</li> </ul> <p><b>Protection system MD2:</b></p> <ul style="list-style-type: none"> <li>• Primer 1 x Floor Expert EP 101 or Floor Expert EP 1013</li> <li>• Quartz sand broadcasting Floor expert quartz...</li> <li>• Seal coat</li> <li>• 2k PAS topcoat, solvent-free Floor Expert PAS 311 HE</li> </ul>	<p><b>Protection system HD1:</b></p> <ul style="list-style-type: none"> <li>• Primer 1 x Floor Expert EP 101 or Floor Expert EP 1013</li> <li>• 2k PU self-leveling floor, solvent-free Floor Expert PU 211 HE</li> <li>• Quartz sand broadcasting Floor expert quartz...</li> <li>• Seal coat 2 x               <ul style="list-style-type: none"> <li>• 2k sb PU topcoat Floor Expert PU 310</li> </ul> </li> </ul> <p><b>Protection system HD2:</b></p> <ul style="list-style-type: none"> <li>• Primer 1 x Floor Expert EP 101 or Floor Expert EP 1013</li> <li>• 2k PU self-leveling floor, solvent-free Floor Expert PU 211 HE</li> <li>• Quartz sand broadcasting Floor expert quartz...</li> <li>• Seal coat 2 x               <ul style="list-style-type: none"> <li>• 2k PAS topcoat, solvent-free Floor Expert PAS 311 HE</li> </ul> </li> </ul>
Thickness: 0.15-0.50 mm	Thickness: 1.0 -1.5 mm	Thickness: 1.5-3.0 mm or 2.0 -4.0 mm

## FLOOR EXPERT SUPPLEMENT PRODUCTS



## FLOOR EXPERT QUARTZ

### High purity dried quartz sand for hard and durable composite flooring systems

#### PURPOSE:

- Filler for primers and self-levelling screeds to increase surface hardness and layer thickness.
- Broadcasting in flooring systems based on epoxy and polyurethane resins.

#### PROPERTIES:

- Without organic impurities
- Round grain shape
- Defined grain size

#### AVAILABLE IN GRANULATIONS:

- 0.1-0.3 mm
- 0.1-0.5 mm
- 0.3-0.9 mm
- 0.6-1.2 mm



#### CONSUMPTION:

- Broadcasted on the primer in the thin layer coatings system to improve the adhesion of the next layer and / or to achieve the anti-slip surface: 0.5 - 1.0 kg/m<sup>2</sup>.
- Broadcasted on the epoxy mortar until the saturation, to increase the layer thickness, improve the mechanical properties and to achieve an anti-slip surface: 4 to 6 kg/m<sup>2</sup>,
- As a filler for self-levelling epoxy coatings (addition 50 %):  
ca. 0.7 kg/m<sup>2</sup> per 1 mm film layer thickness.

#### PACKAGING 25 KG

## FLOOR EXPERT T/A THICKENER

**Powdery additive based on polyethylene for textured surfaces and against sagging**

### PURPOSE:

- Additive for adjusting consistency (thickening) of Floor expert products based on organic resins.

### PROPERTIES:

- Easy mixing into the materials based on reactive resin
- resistant to light, weathering, and alkalis
- prevents sagging of the material applied on vertical and slanted surfaces
- enables a structured surface appearance (an anti-slip effect).
- adjusts consistency of the epoxy mortars for trowel application

### CONSUMPTION:

- 0.5- 4.0 %, based on product (A+B), depending on the desired consistency.



PACKAGING 1 KG

PACKAGING 10 KG

## FLOOR EXPERT CLEANER

**Solvent mixture for cleaning and diluting Floor Expert products based on reactive resins.**

### APPLICATION:

- Cleaning of unhardened residues of Floor Expert products from tools and application machines.
- diluting Floor Expert products to adjust the viscosity for application.

### PROPERTIES:

- Cleans unhardened resin residues from various substrates.
- good dilution property

### CONSUMPTION:

- depends on the application

### PACKAGING:

- 4 l

## FLOOR EXPERT COLOUR FLAKES

### Decorative colored flakes (chips)

#### PURPOSE:

- Decorative chips of irregular shape for the floor coatings based on epoxy, polyurethane, and acrylic resins. The flakes should be sprinkled on the freshly applied coating layer to achieve an interesting multi-coloured effect.

#### PROPERTIES:

- Thin slices (approx. 120 microns)
- A large specific surface area
- Not toxic nor hazardous to health
- Fire resistant
- Interesting decorative effects can be achieved by mixing chips of different colors.

#### CONSUMPTION:

- For the contrast effect:  
0.005 to 0.03 kg / m<sup>2</sup>.
- For full covering of the substrate:  
0.7 - 1.2 kg / m<sup>2</sup>
- Available colors: white, dark gray, light gray, black, orange, beige, yellow, bird-blue, navy- blue and red -oxide. Effects: glitter silver, glitter gold, "glow in dark".



PACKAGING 0.5 KG

## COLOR CARD FOR FLOOR EXPERT COLOUR FLAKES



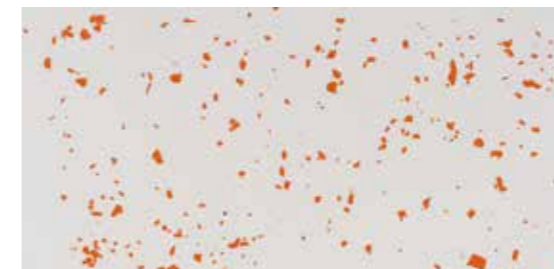
white



light gray



black



orange



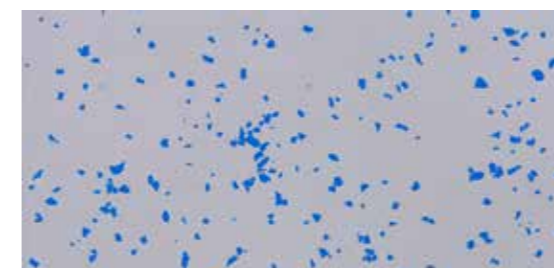
beige



yellow



bird-blue



navy- blue



red -oxide







Chromos boje i lakovi d.d.  
Radnička cesta 173 D  
10000 Zagreb, Hrvatska  
Tel.: +385 1 2410 666  
[www.chromos.eu](http://www.chromos.eu)

Member of KANSAI HELIOS.

Follow us on:

 Chromos boje i lakovi  
 Helios Architectural/Floor Expert